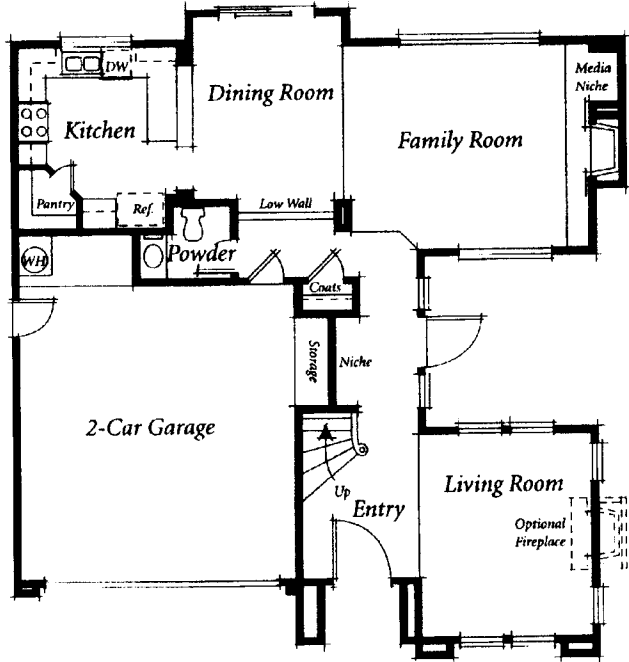


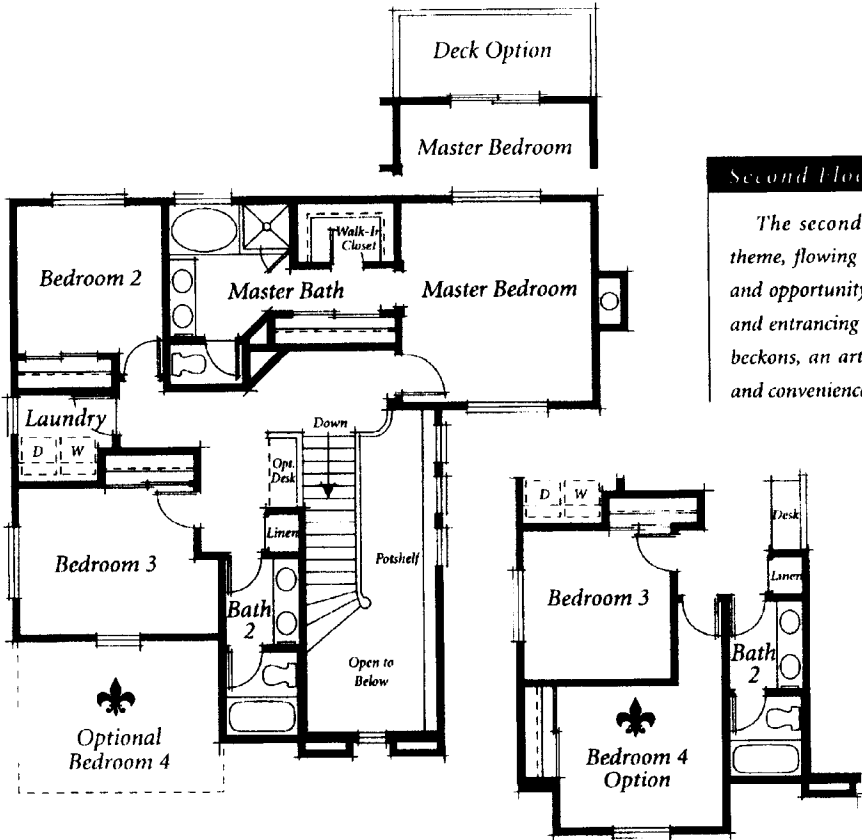
First Floor

Indeed, as you step inside, this comfortable feeling envelopes you, drawing you past the cozy living room, through a spacious family room and adjoining dining room, and ultimately, the kitchen, where all things tasty and comforting originate.

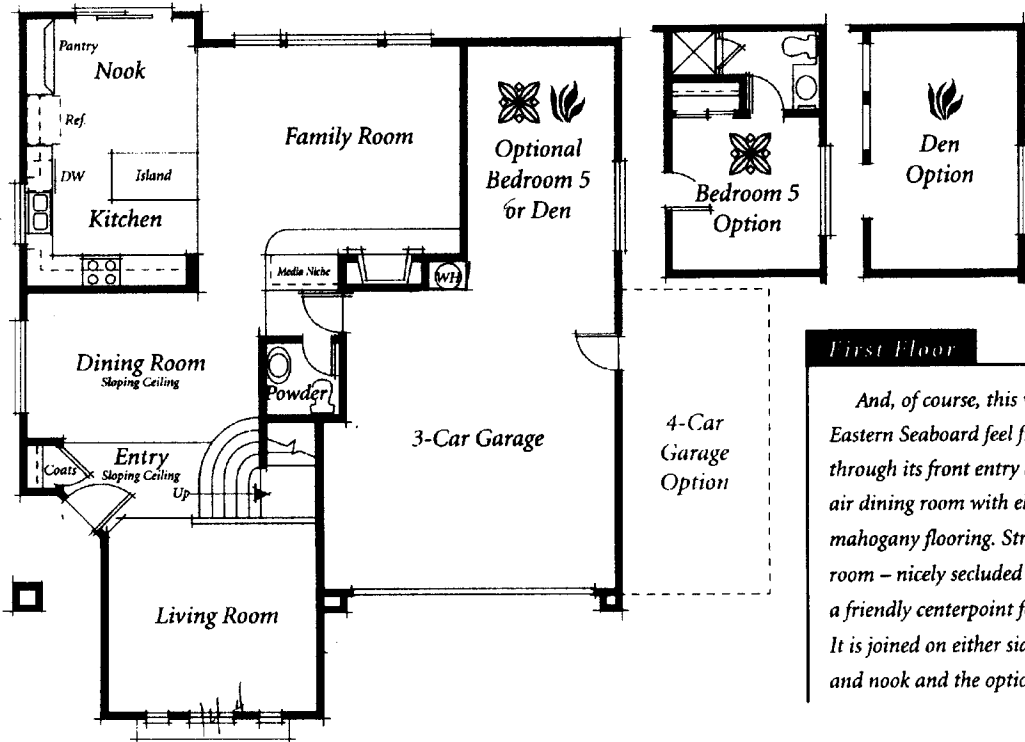


Second Floor

The second level continues this enchanting theme, flowing through bedrooms two and three – and opportunity for a fourth – complete with nooks and entrancing details. Finally, the master bedroom beckons, an artistic abode for pampering, comfort, and conveniences.



TRACT: (WYNG) Wyngate MODEL: B Cape (2) - 2131 Sq.Ft. Sq.Ft. (Approx)
 Copyright ©The Inside Tract™ - All rights reserved.

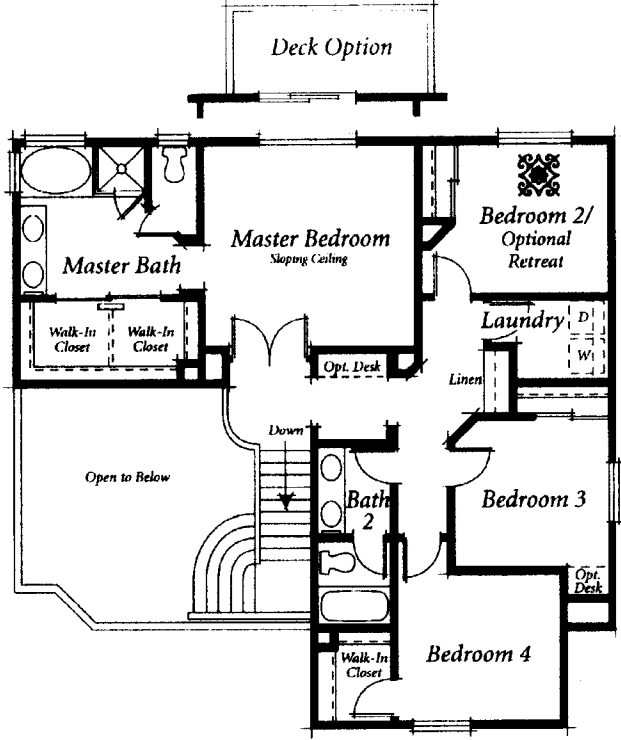
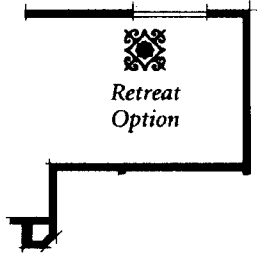


First Floor

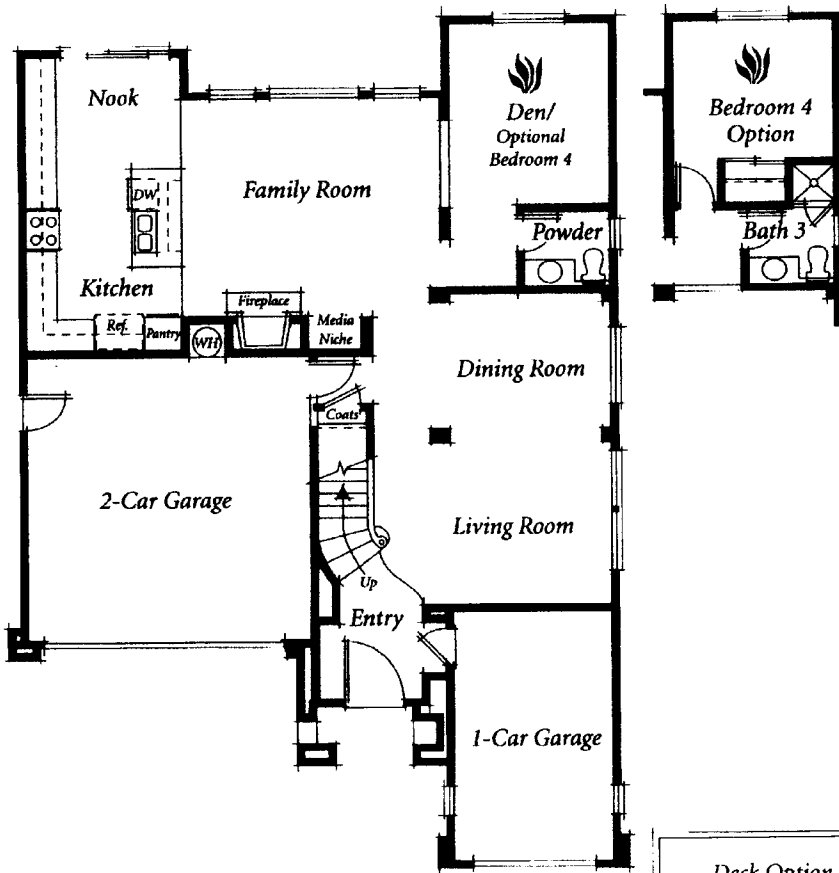
And, of course, this wonderful plan reflects this Eastern Seaboard feel from the moment you step through its front entry and meet with a lovely, open-air dining room with elegant sloped ceiling and rich mahogany flooring. Stroll past the spacious living room – nicely secluded – and into the family room – a friendly centerpoint for family togetherness. It is joined on either side by a wonderful kitchen and nook and the option for a den or fifth bedroom.

Second Floor

An elegant staircase introduces you to the second level and a magnificent master bedroom. His and her walk-in closets and all the amenities of luxury grace this haven. Bedrooms two, three, and four make the rest of the family a priority, as well, with thoughtful features throughout and an upstairs laundry for added convenience.



TRACT: (WYNG) Wyngate MODEL: C Mission (3) - 2312 Sq.Ft. Sq.Ft. (Approx)
 Copyright ©The Inside Tract™ - All rights reserved.



First Floor

Truly, this home is a masterpiece, inviting visitors past two separate garages, through its grand entry, and into an even grander living room and adjoining dining room. The family room, with cozy hearth and built-in media niche, is a welcome neighbor to a den or optional fourth bedroom on one side, and the gourmet kitchen on the other.

Second Floor

Magnificent terra cotta tiling leads you to a wrought-iron-lined staircase and up to the incredible second floor. Here, bedrooms two and three – and options for a loft or fifth bedroom – are designed for comfort and down-to-earth living. The master bedroom is a wish list completed – featuring everything your heart desires.

